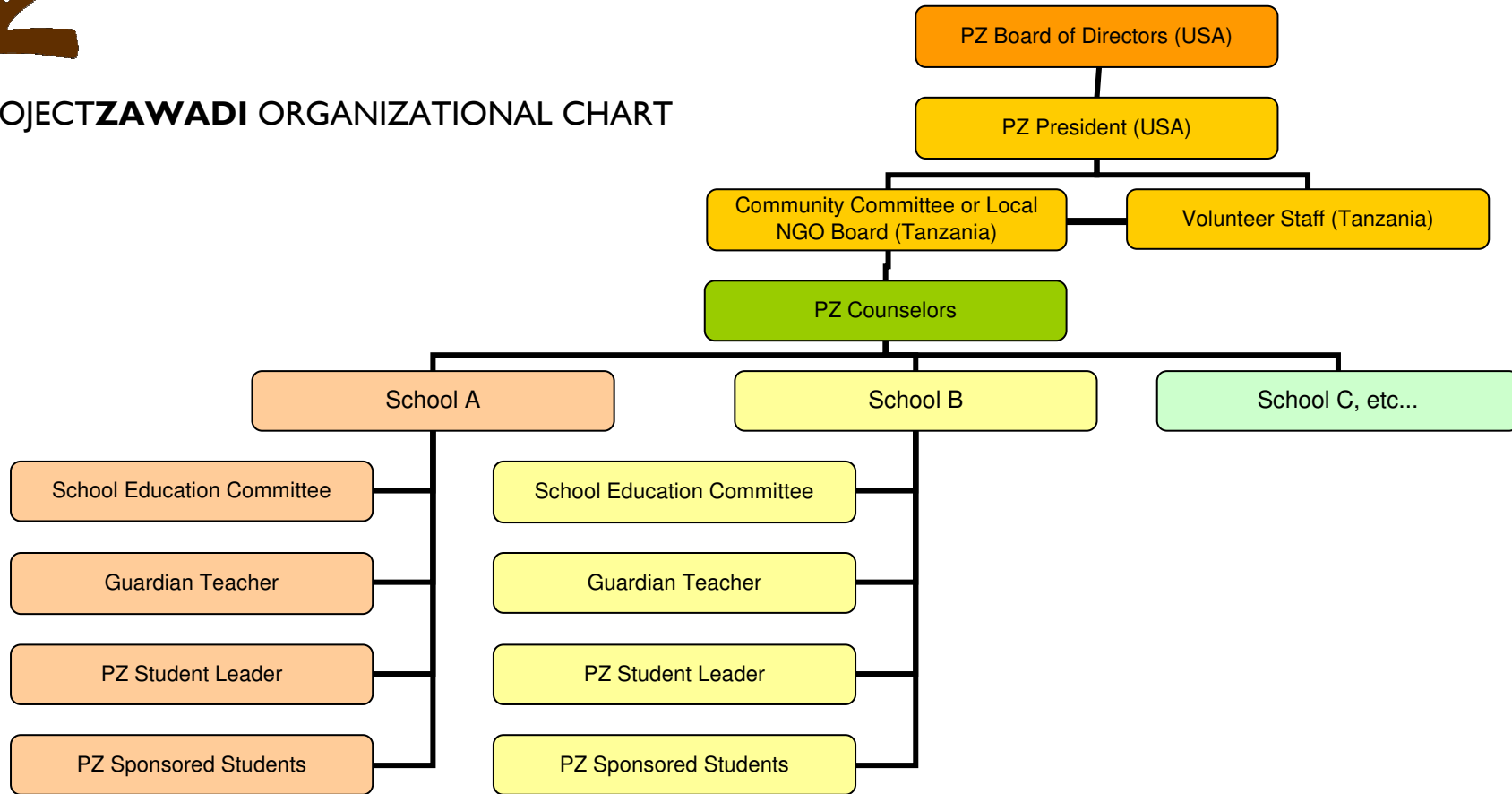




## PROJECTZAWADI ORGANIZATIONAL CHART



**NOTES:** This chart reflects the community model in place in Nyamuswa, Tanzania and that is being duplicated in Mugumu, Tanzania

- ~ PZ Board of Directors meets 4-6 times annually.
- ~ PZ President makes annual visits to Tanzania to inspect records, assess progress and report major findings to PZ Board.
- ~ PZ President also has frequent email and phone contact with Volunteer Staff and Community Committee/NGO's leadership.
- ~ Volunteer Staff makes periodic visits to double check Community Committee/NGO's work and to consult on decisions.
- ~ Community Committee/NGO meets on a regular basis and supervises the work of the PZ Counselors.
- ~ PZ Counselors visit each school a minimum of 1 time each month.
- ~ Each School has a democratically elected 'Education Committee'. This committee selects the neediest students.
- ~ Community Committee/NGO and PZ Counselors make sure selections were fair and education supplies are presented to students in a public meeting.
- ~ PZ Students select a Guardian Teacher and a PZ Student Leader.
- ~ Guardian Teachers are the PZ Counselors' first point of contact at each school.